

## 67-200 Removal and installation of rear window

### Removal

- 1 Remove hat rack (68-458).
- 2 Pull off edge protection in range of panelling (trim) on rear pillar left and right.
- 3 Force off holding clips on linings of rear pillar, front, with wedge toward center of vehicle, slip in upward direction and put down in rear passenger compartment.
- 4 Separate electric connections on cable connector on lefthand and righthand rear pillar.
- 5 Push back rubber frame on vehicle inner side by means of a plastic wedge behind spot weld flange of window opening.
- 6 Carefully push rear window from inside in outward direction and remove. Pay attention to contact wires or lateral bus bars, respectively.
- 7 Remove ornamental frame on rear window (67-220).
- 8 Remove sealing frame from rear window.



67.6-200/1 F 3

## Installation

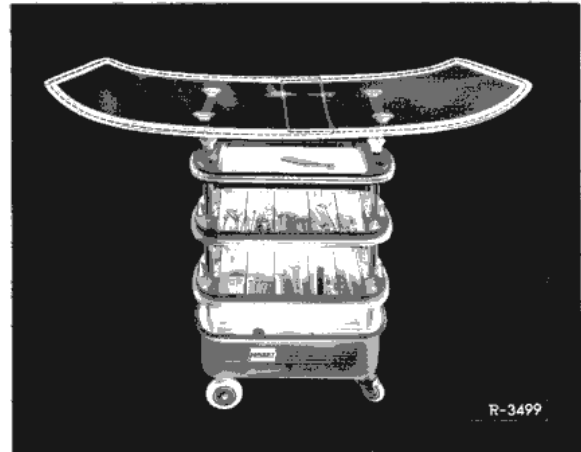
9 Place rear window with crown in downward position on corresponding base.

10 Pull sealing frame on rear window.

11 Install ornamental frame in sealing frame (67-220).

**Note:** Fill upper joint abutment of ornamental frame prior to assembly of cover with MB glass sealing compound, so that no water can flow over window glass.

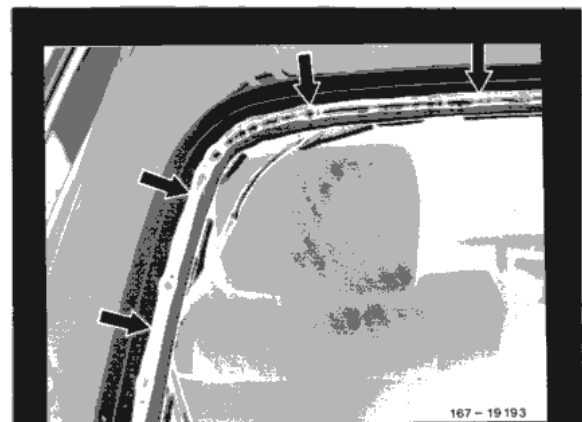
12 Insert two greased cords into holding slot of sealing frame and rub sealing frame with soap water.



13 Apply MB glass sealing compound all-around in body flange.

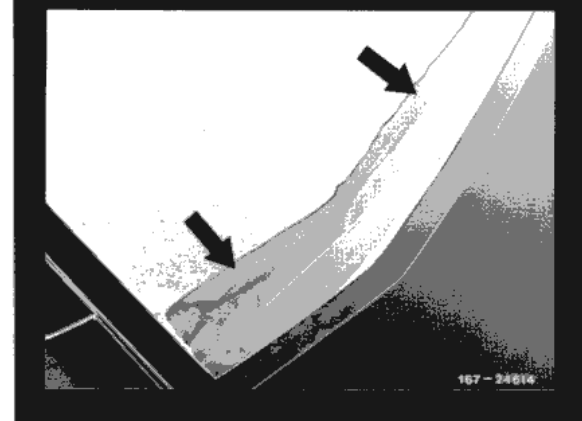
14 Insert pre-assembled rear window with sealing frame from outside to window opening and align.

Shown on model 126



15 To avoid wind noises, align height of rear window in such a manner that upon installation the upper edge of the ornamental frame is 0-1 mm lower than the roof panelling.

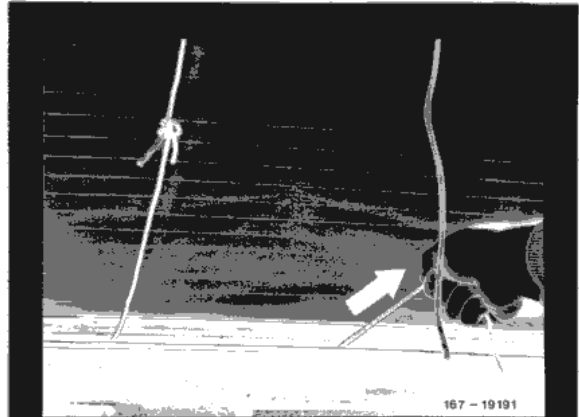
Shown on model 126



67.6-200/2 F 3

16 Press lightly against rear window, while simultaneously letting a helper inside vehicle carefully pull out cord to lift the rubber lip of the sealing frame starting from below over spot weld flange of window opening.

**Note:** Pull off cord in parallel with glass to prevent damaging rubber lip.



17 Seal with MB glass sealing compound all-around between glass and outside of sealing frame.

18 Continue installation in vice-versa sequence.

**Note:** Excess sealing material can be removed by dabbing with adhesive tape.

