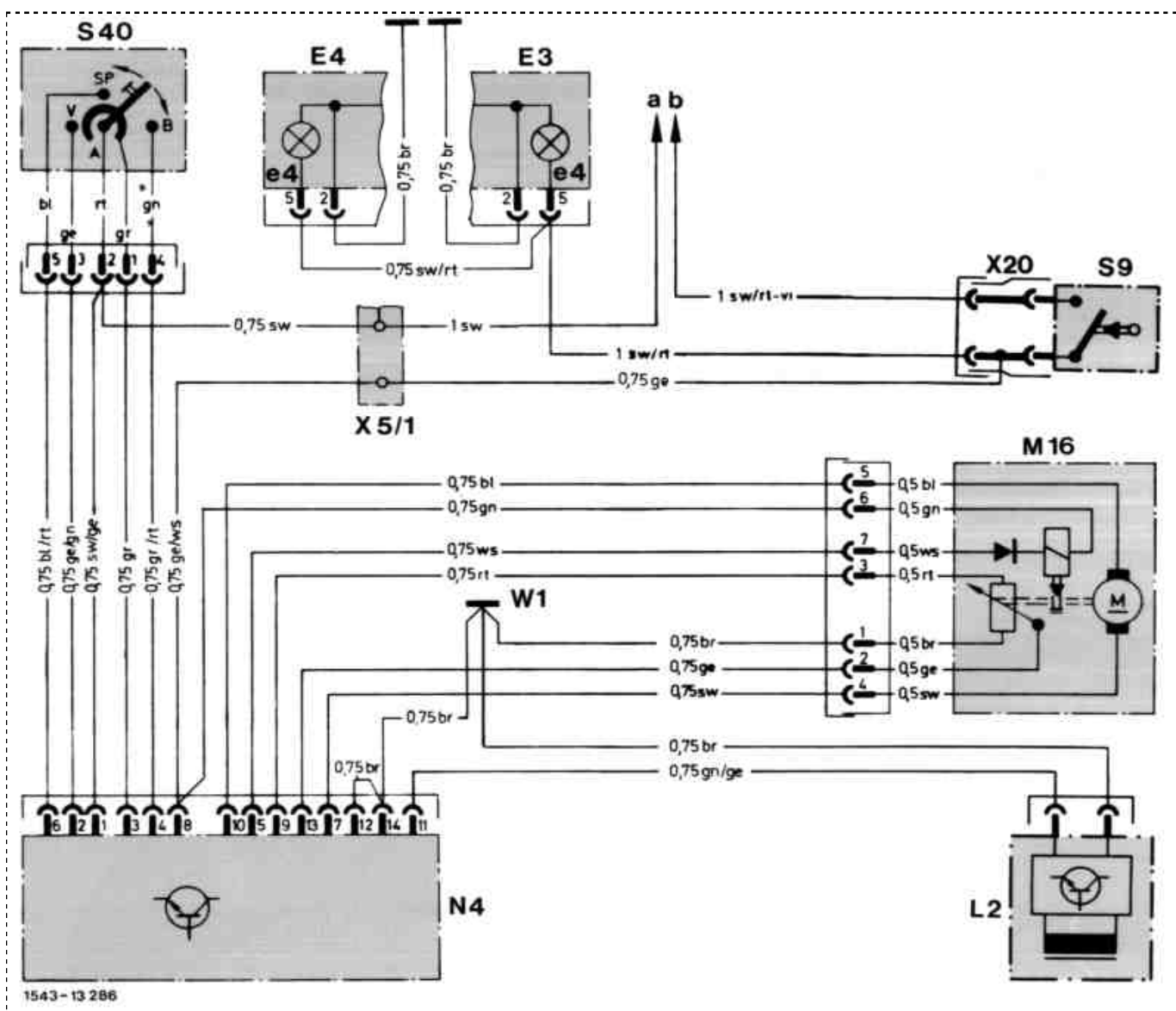


G. Model 201 with diesel engine and automatic transmission

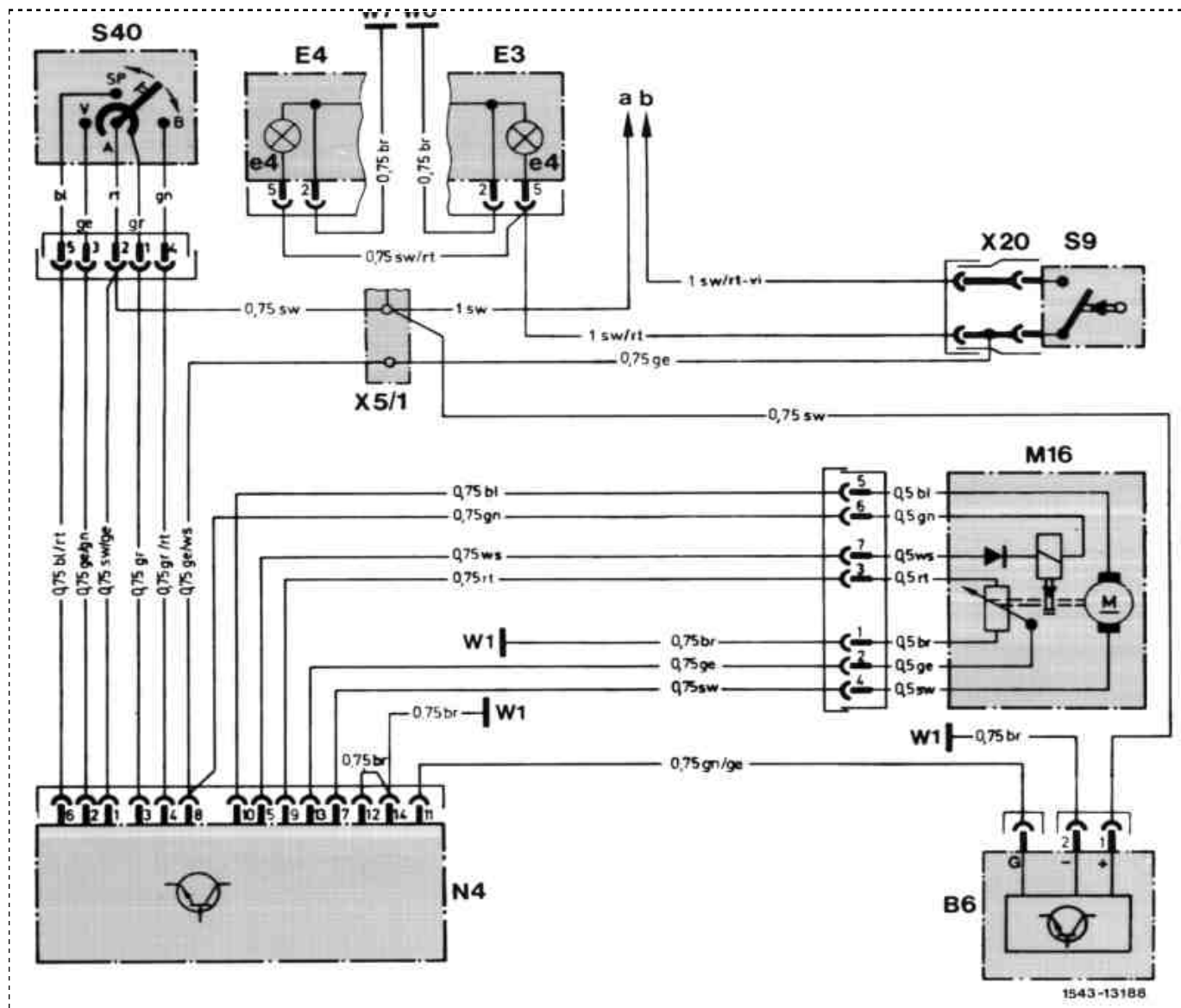


Model 201.122 up to approx. 08/85

E3	Left tail lamp unit	W1	Main ground (behind instrument cluster)
E3e4	Stop lamp	W6	Ground, left rear wheelhouse in trunk
E4	Right tail lamp unit	W7	Ground, right rear wheelhouse in trunk
E4e4	Stop lamp	X5/1	Terminal block, interior (5-pole)
L2	Road speed sensor	X20	Connector, stop lamp switch
M16	Cruise control actuator	a	On electrical center, coupling field L, line-up 1

N4 Cruise control amplifier
 S9 Stop lamp switch
 S40 Cruise control switch
 V Decelerate/set
 B Accelerate/set
 SB Resume
 A Off

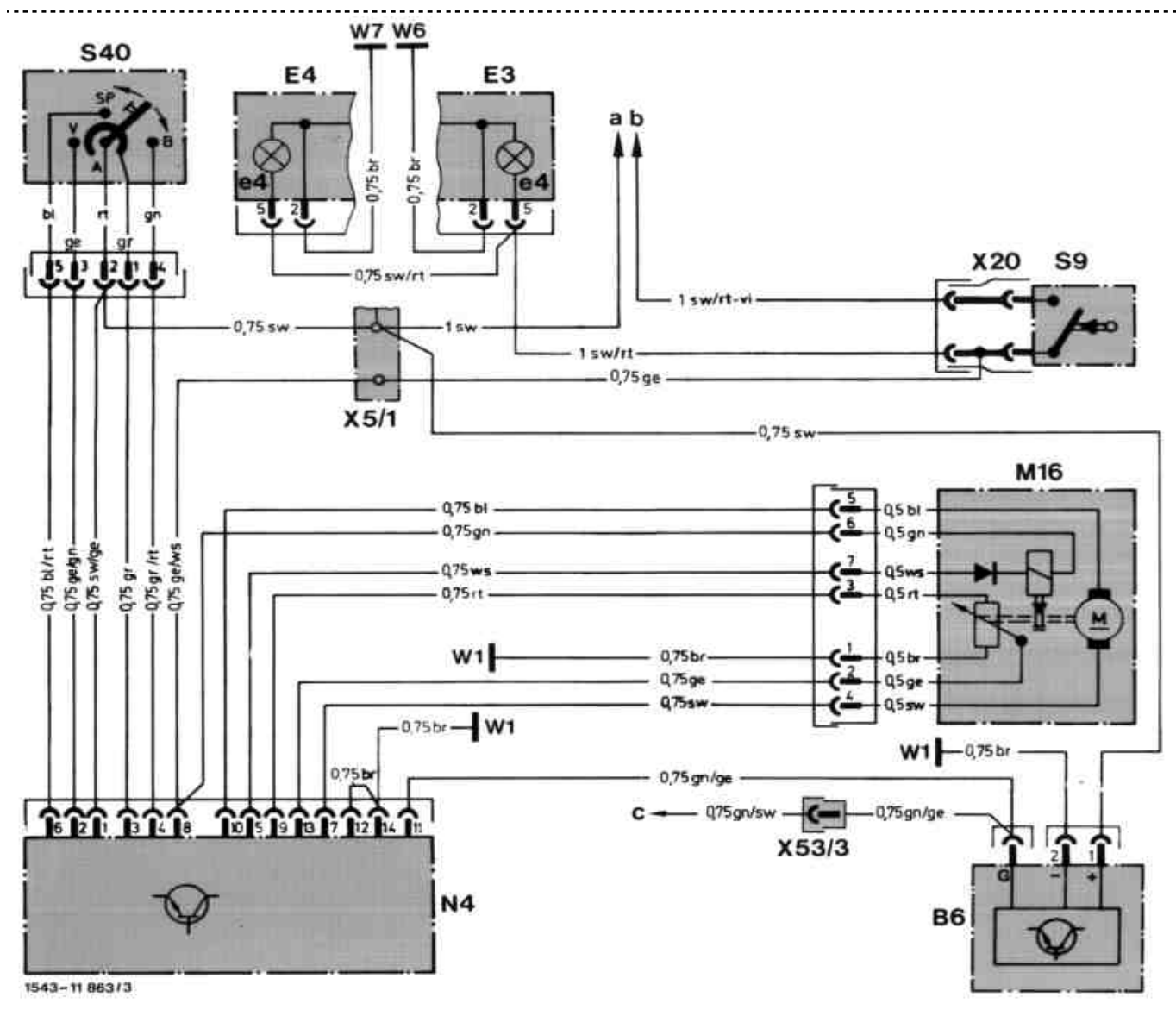
b On electrical center, coupling field C, line-up 1



Model 201.122/126 as of approx. 09/85 up to vehicle ident. end no. A 313825/F 229814, except: USA as of 1986

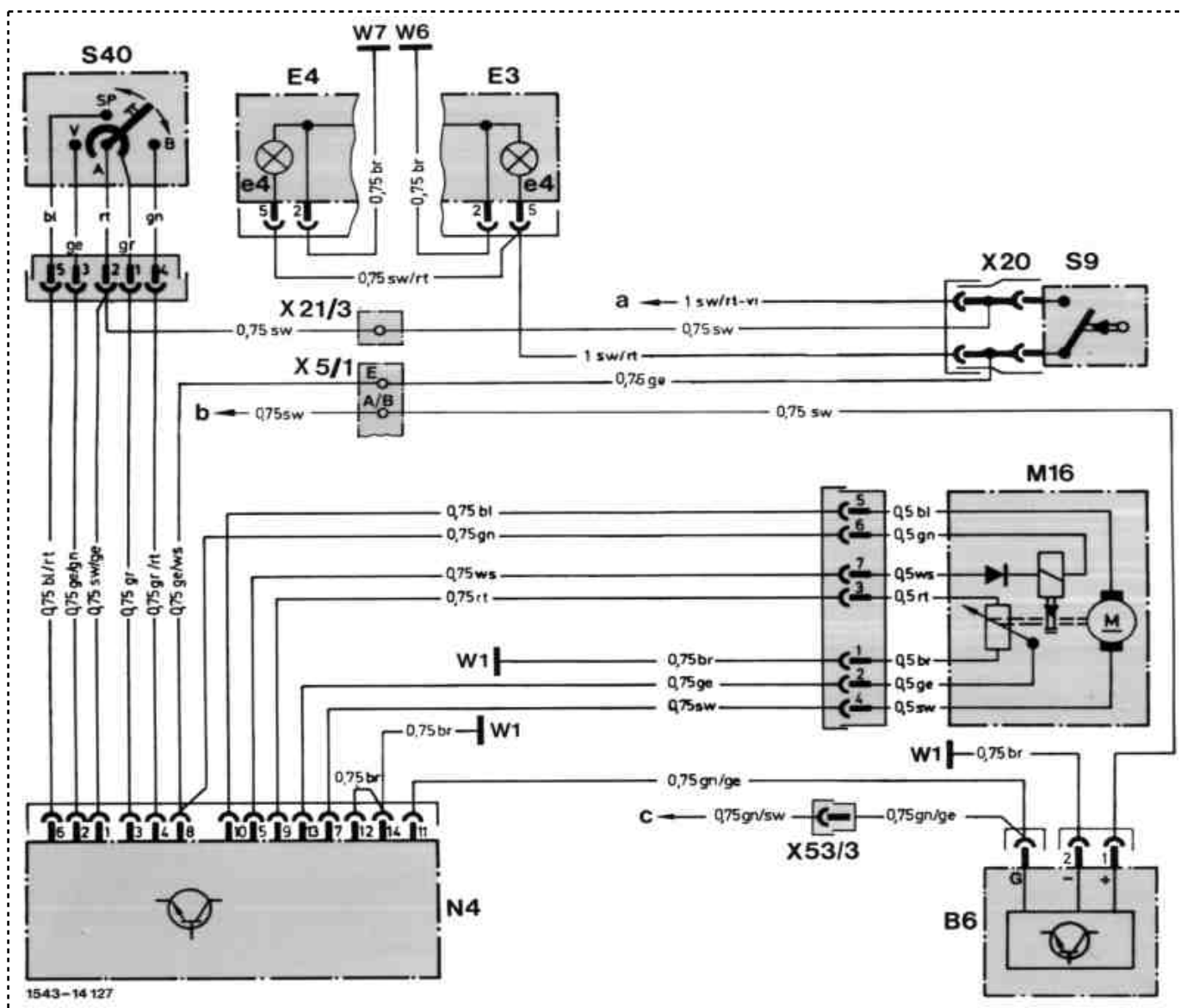
B6 Hall-effect speed sensor
 E3 Left tail lamp unit
 E3e4 Stop lamp
 E4 Right tail lamp unit
 E4e4 Stop lamp
 M16 Cruise control actuator
 N4 Cruise control amplifier
 S9 Stop lamp switch
 S40 Cruise control switch
 V Decelerate/set
 B Accelerate/set
 SB Resume
 A Off

W1 Main ground (behind instrument cluster)
 W6 Ground, left rear wheelhouse in trunk
 W7 Ground, right rear wheelhouse in trunk
 X5/1 Terminal block, interior (5-pole)
 X20 Connector, stop lamp switch
 a On electrical center, coupling field L, line-up 1
 b On electrical center, coupling field C, line-up 1



Model 201.126 (USA) 1986 up to vehicle ident. end no. F 229814

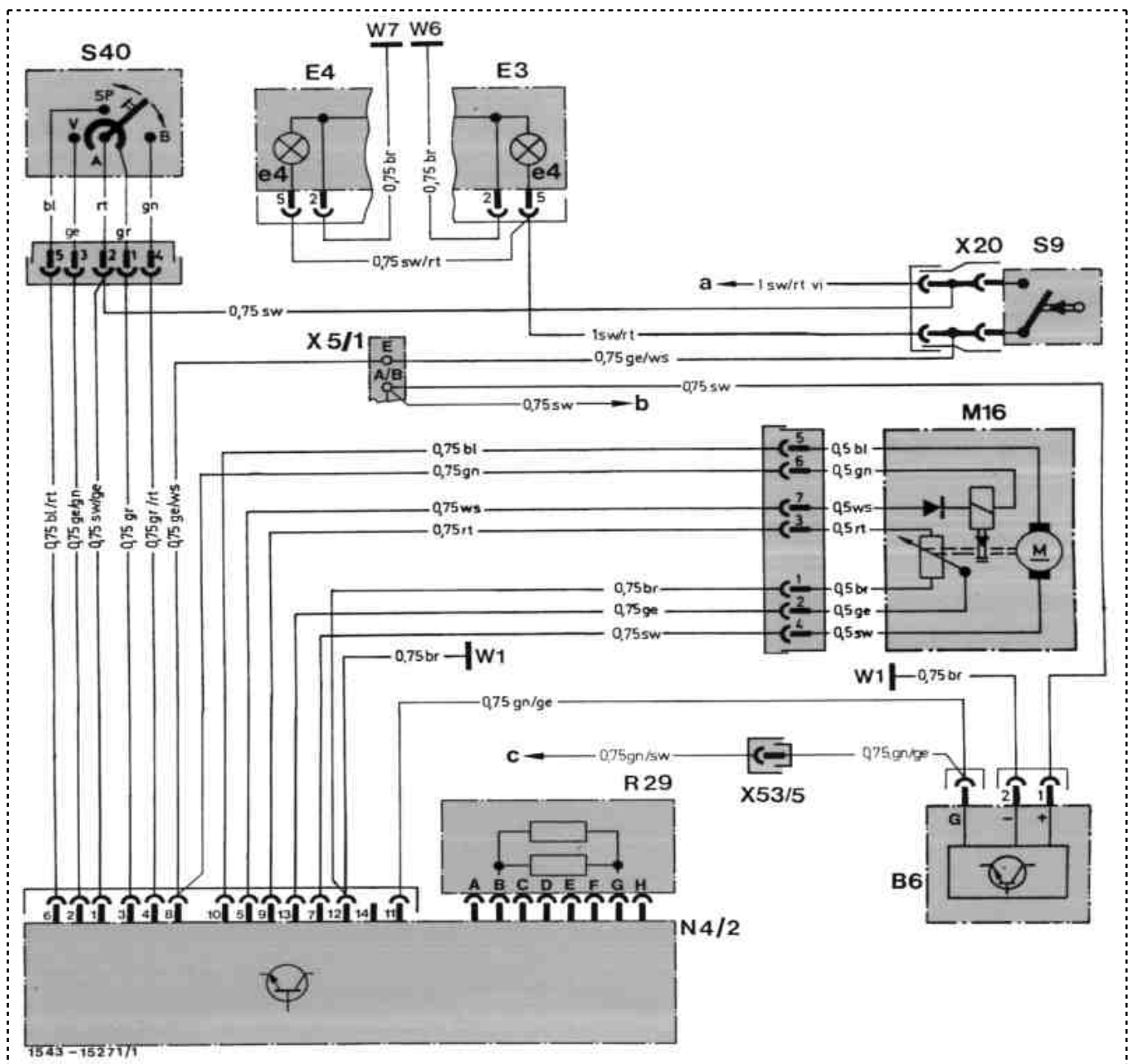
B6	Hall-effect speed sensor	W1	Main ground (behind instrument cluster)
E3	Left tail lamp unit	W6	Ground, left rear wheelhouse in trunk
E3e4	Stop lamp	W7	Ground, right rear wheelhouse in trunk
E4	Right tail lamp unit	X5/1	Terminal block, interior (5-pole)
E4e4	Stop lamp	X20	Connector, stop lamp switch
M16	Cruise control actuator	X53/3	Connector, Hall-effect sensor/EGR (1-pole)
N4	Cruise control amplifier	a	On electrical center, coupling field L, line-up 1
S9	Stop lamp switch	b	On electrical center, coupling field C, line-up 1
S40	Cruise control switch	c	On control unit exhaust gas recirculation line-up 5
V	Decelerate/set		
B	Accelerate/set		
SB	Resume		
A	Off		



Model 201.126 (USA) 1986, 1987 as of vehicle ident end no. F 229815
up to vehicle ident. end no. F 286572

B6 Hall-effect speed sensor
E3 Left tail lamp unit
E3e4 Stop lamp
E4 Right tail lamp unit
E4e4 Stop lamp
M16 Cruise control actuator
N4 Cruise control amplifier
S9 Stop lamp switch
S40 Cruise control switch
V Decelerate/set
B Accelerate/set
SB Resume
A Off

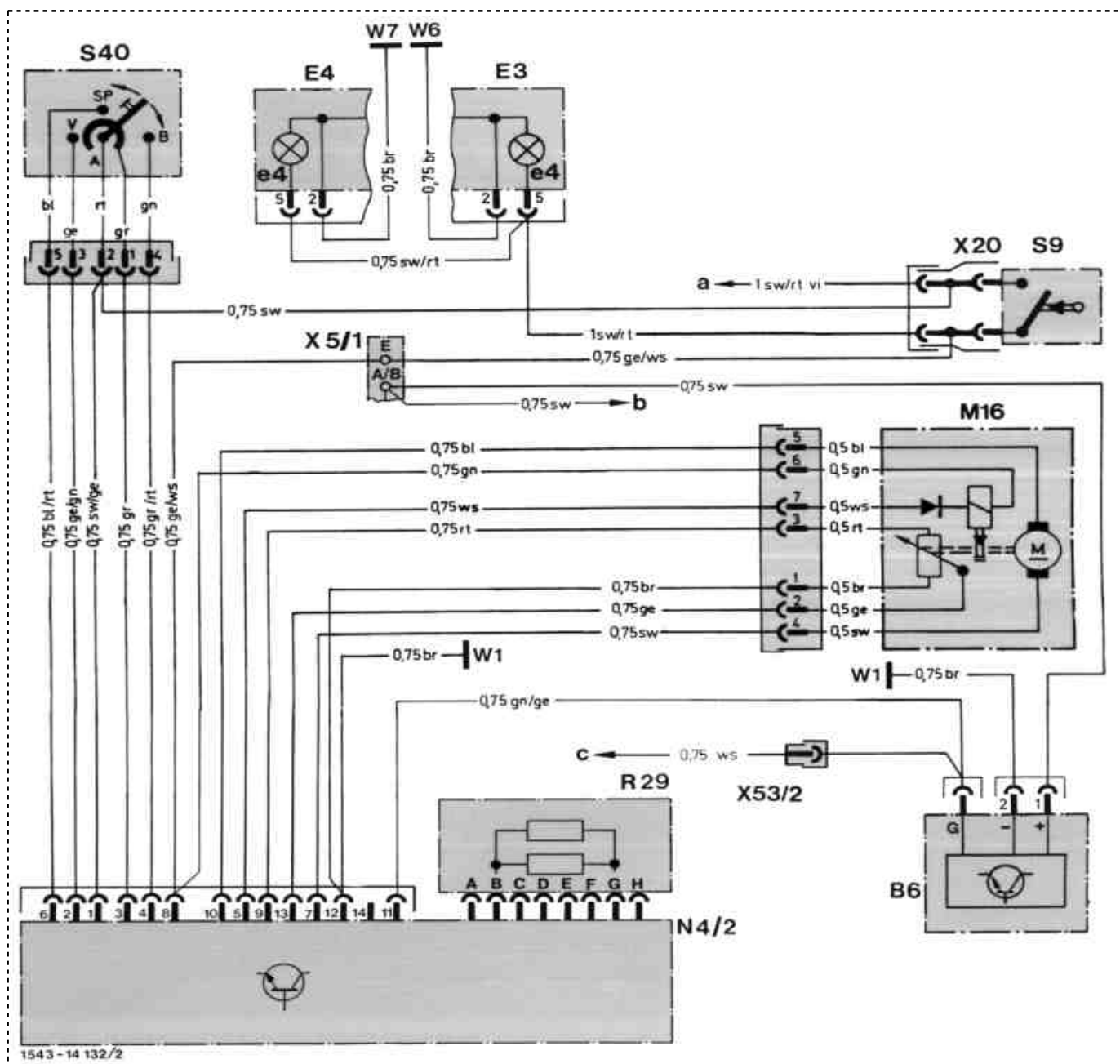
W1 Main ground (behind instrument cluster)
W6 Ground, left rear wheelhouse in trunk
W7 Ground, right rear wheelhouse in trunk
X5/1 Terminal block, interior (5-pole)
A/B ident. colour black
E ident. colour yellow
X20 Connector, stop lamp switch
X21/3 Terminal block, stop lamp switch/cruise control (1-pole)
X53/3 Connector, Hall-effect sensor/EGR (1-pole)
a On electrical center, coupling field C, line-up 1
b On electrical center, coupling field L, line-up 1
c On control unit exhaust gas recirculation line-up 5



Model 201.126 ^{USA} as of 1988

B6	Hall-effect speed sensor
E3	Left tail lamp unit
E3e4	Stop lamp
E4	Right tail lamp unit
E4e4	Stop lamp
M16	Cruise control actuator
N4/2	Cruise control amplifier with reference resistor
R29	Cruise control reference resistor
S9	Stop lamp switch
S40	Cruise control switch
V	Decelerate/set
B	Accelerate/set
SB	Resume
A	Off

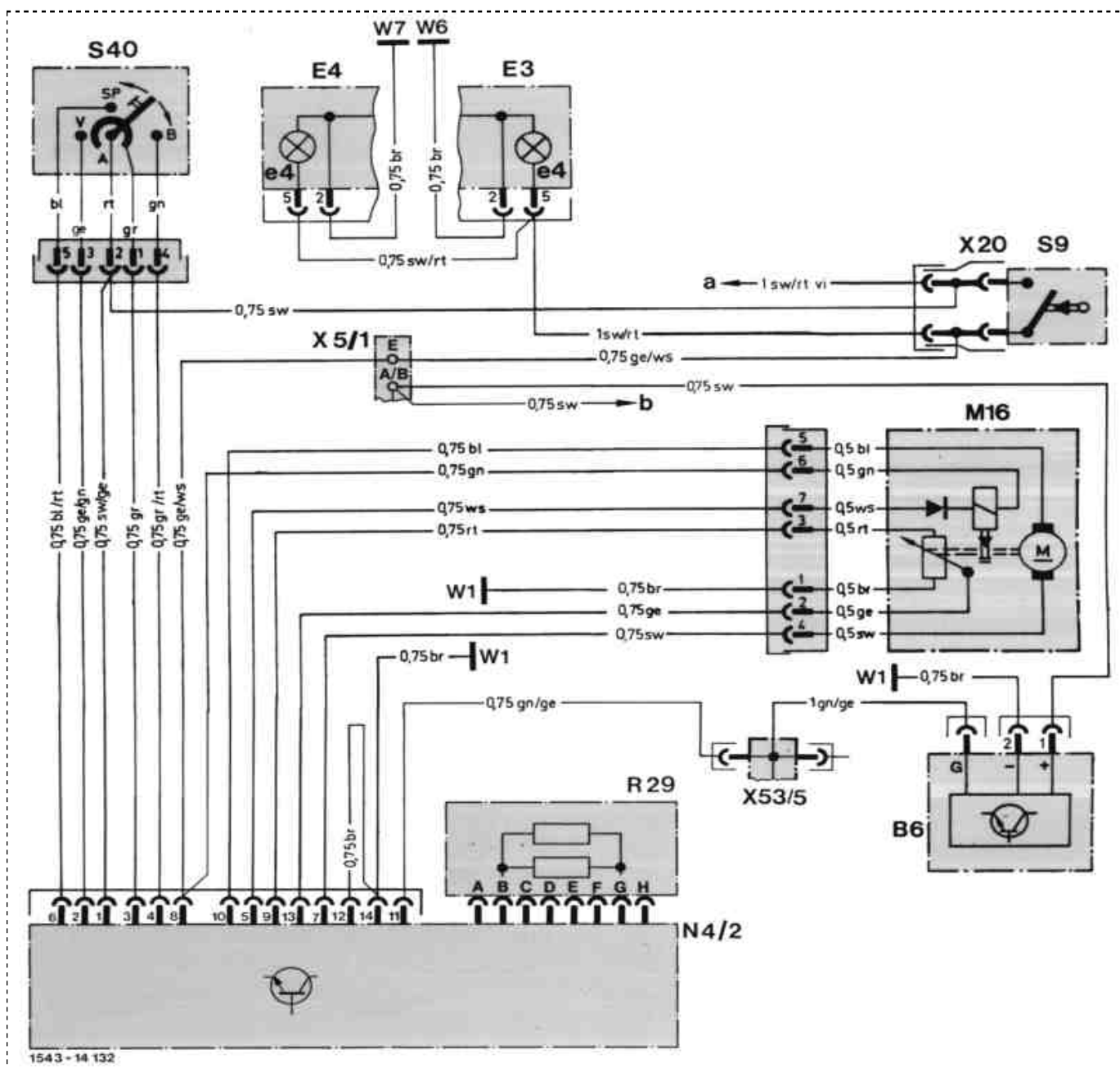
W1	Main ground (behind instrument cluster)
W6	Ground, left rear wheelhouse in trunk
W7	Ground, right rear wheelhouse in trunk
X5/1	Terminal block, interior (5-pole)
	A/B ident. colour black
	E ident. colour yellow
X20	Connector, stop lamp switch
X53/3	Connector, Hall-effect sensor/EGR (1-pole)
a	On electrical center, coupling field C, line-up 1
b	On electrical center, coupling field L, line-up 1
c	On control unit exhaust gas recirculation line-up 1



Model 201.128 except ^{USA} up to approx. 08/89

B6	Hall-effect speed sensor
E3	Left tail lamp unit
E3e4	Stop lamp
E4	Right tail lamp unit
E4e4	Stop lamp
M16	Cruise control actuator
N4/2	Cruise control amplifier with reference resistor
R29	Cruise control reference resistor
S9	Stop lamp switch
S40	Cruise control switch
V	Decelerate/set
B	Accelerate/set
SB	Resume
A	Off

W1	Main ground (behind instrument cluster)
W6	Ground, left rear wheelhouse in trunk
W7	Ground, right rear wheelhouse in trunk
X5/1	Terminal block, interior (5-pole)
A/B	ident. colour black
E	ident. colour yellow
X20	Connector, stop lamp switch
X53/2	Connector, Hall-effect sensor/ Tempomat (cruise control)
a	On electrical center, coupling field C, line-up 1
b	On electrical center, coupling field L, line-up 1
c	On outside temperature indicator A1p4



Model 201.128 (USA) 1987

B6	Hall-effect speed sensor
E3	Left tail lamp unit
E3e4	Stop lamp
E4	Right tail lamp unit
E4e4	Stop lamp
M16	Cruise control actuator
N4/2	Cruise control amplifier with reference resistor
R29	Cruise control reference resistor
S9	Stop lamp switch
S40	Cruise control switch
V	Decelerate/set
B	Accelerate/set
SB	Resume
A	Off

W1	Main ground (behind instrument cluster)
W6	Ground, left rear wheelhouse in trunk
W7	Ground, right rear wheelhouse in trunk
X5/1	Terminal block, interior (5-pole)
	A/B ident. colour black
	E ident. colour yellow
X20	Connector, stop lamp switch
X53/5	Multipoint connector, Hall-effect sensor
a	On electrical center, coupling field C, line-up 1
b	On electrical center, coupling field L, line-up 1